





PLATED DRIVE PINS				
Designed for use in concrete and structural steel applications. 100 per box.				
	PART NUMBER	SHANK LENGTH		MASTER CARTON QUANTITY
		IN.	(MM)	
	1503K	1/2 Knurled	(12.7)	50
	1506	3/4	(19.1)	12
	1508	1	(25.4)	12
	1510	1-1/4	(31.8)	10
	1512	1-1/2	(38.1)	12
Shank diameter = .145 Head diameter = .300				

PLATED DRIVE PINS WITH 7/8" WASHER				
Washer increases bearing surface against the material to be fastened. Plated pin pre-assembled with 7/8" diameter washer.				
	PART NUMBER	SHANK LENGTH		MASTER CARTON QUANTITY
		IN.	(MM)	
	1508SD	1	(25.4)	1,000
	1510SD	1-1/4	(31.8)	1,000
	1512SD	1-1/2	(38.1)	1,000
Shank diameter = .145 Head diameter = .300 *Square washer indicates 3" pin has been installed.				

POWERPOINT STEP SHANK PINS			
Premium hard concrete and steel pin. 100 per box.			
	PART NUMBER	SHANK LENGTH	
		IN.	(MM)
	SP12	1/2	(12.7)
	SP100	1	(25.4)
	SP178*	1-7/8	(47.6)
Shank diameter = .150 * Head diameter= .150/.180 ** Shank diameter = .125/.150 with 1/2" washer Head diameter = .300			

TOP HAT DRIVE PINS			
Used for general purpose fastening to steel. Plated pin with top hat. 100 per box.			
	PART NUMBER	SHANK LENGTH	
		IN.	(MM)
	SP58TH	5/8	(15.9)
Shank diameter = .150 Head diameter = .300			

RAMSET .27 CALIBER LOADS				
PART NUMBER	POWER LEVEL	COLOUR	PACKAGING	MASTER CARTON QUANTITY
C3RS27	3	GREEN	All 10 shot strip 10 strips/box	600
C4RS27	4	YELLOW	All 10 shot strip 10 strips/box	600
C5RS27	5	RED	All 10 shot strip 10 strips/box	600



RA27

ramset.ca



RA27

THE POWER OF
PRODUCTIVITY

Ramset’s fully automatic powder-actuated tool,
lowering downtime and fatigue on commercial job sites

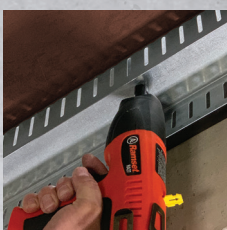
The Right Answer for Commercial Contractors

Ramset's fully automatic RA27 powder-actuated tool, reduces downtime and fatigue on commercial jobsites. The RA27 stands up to tough use for interior and exterior applications.

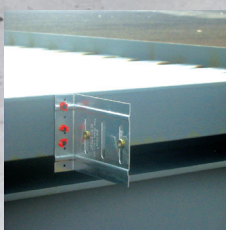
Common Applications



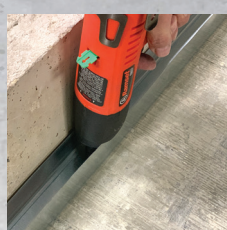
TRACK-TO-
CONCRETE



TRACK-TO-
STEEL



EXTERIOR
CLADDING CLIPS



DEEP LEG
TRACK



ELECTRICAL/
UNISTRUT



HAT
CHANNEL

Power adjust dial enables user to dial down power for ideal pin embedment

More power, load for load, provides flexibility in a wide range of applications

Patented RRC (Residue Release Channel) allows tool to work longer between cleanings (up to 10,000 shots)

Lower pushdown force reduces fatigue

Long-lasting piston reduces downtime

Padding absorbs recoil, lowers fatigue

Belt/tether clip for safety

Swing-out scaffold hook keeps the tool within reach

Collar requires only 1/4 turn for quicker cleaning

3	4	5
GREEN	YELLOW	RED

POWDERLOAD IDENTIFICATION

Lower Power → Higher Power

Product Specifications:

- Part number: RA27
- Weight: 5.3 lbs
- Maximum pin length without washer: 1 1/2"
- Maximum pin length with washer: 2"
- 3-year warranty
- For use with .27 caliber loads (green, yellow, red)

RA27 Tool Kit:

- Safety glasses
- Spall guard
- Two cleaning brushes
- Operators manual